

# Knowledgebase Article

---

## Installed Application Change Log in NI

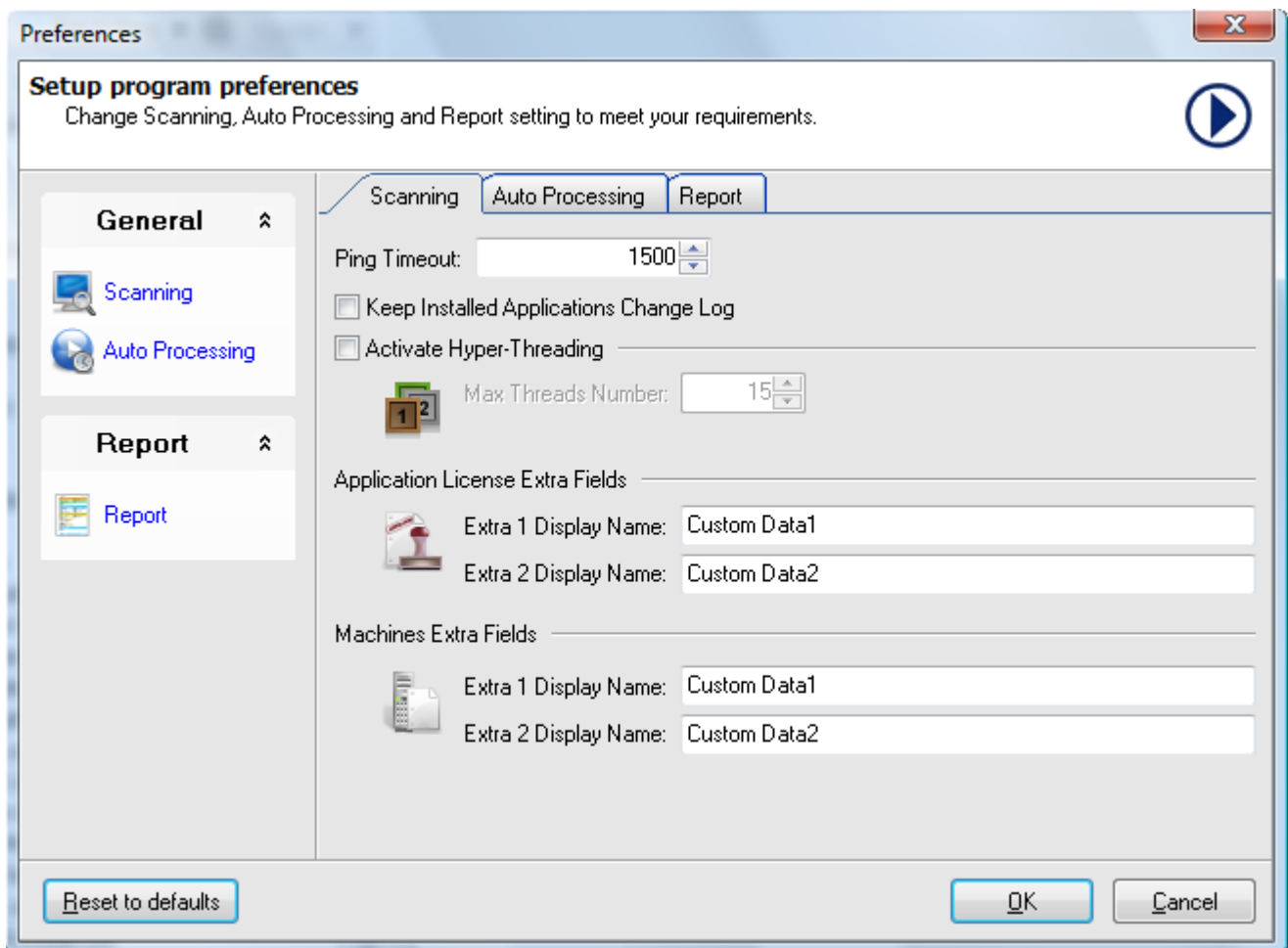
© Copyright 2001-2012 EMCO Software

## Installed Application Change Log in NI

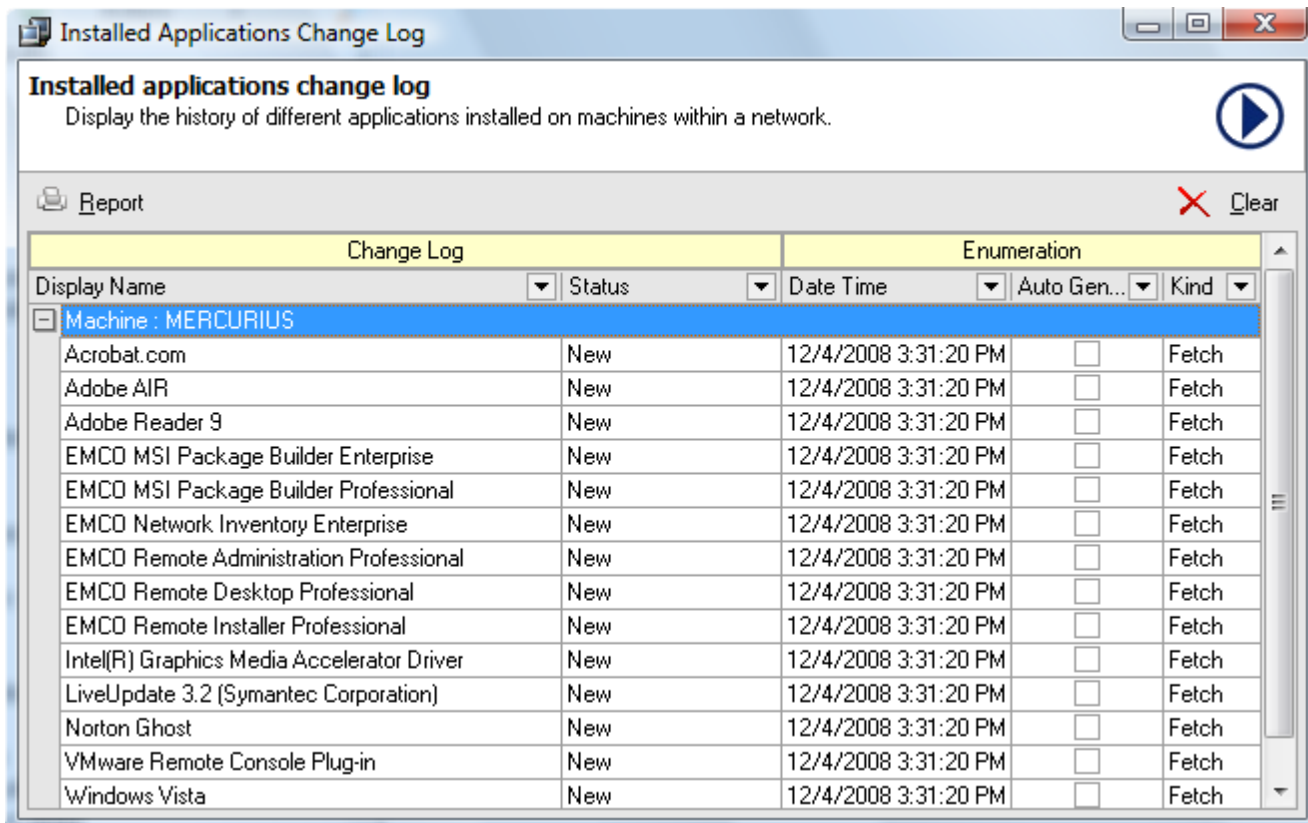
New EMCO Network Inventory 5 allows you to track the installed applications list changes from the machines over a network. It helps you to manage the installation history of different applications. You can use this feature of Network Inventory 5 to inquire which applications were installed on every machines.

**To keep the log of installed applications on your network perform the following steps:**

1. Switch to Options tab.
2. Expand System node.
3. Expand Keep Change Log node.
4. Check Installed Applications check box under Keep Change Log node.



5. Switch back to Mange tab.
6. Expand Management Tools node.
7. Expand Installed Applications node.
8. Click Change Log node.
9. Installed Applications Change Log dialog appears on the screen.
10. Expand the required machine node to see the log of installed applications on it.



**Installed applications change log**  
Display the history of different applications installed on machines within a network.

Report X Clear

Change Log		Enumeration		
Display Name	Status	Date Time	Auto Gen...	Kind
Machine : MERCURIUS				
Acrobat.com	New	12/4/2008 3:31:20 PM	<input type="checkbox"/>	Fetch
Adobe AIR	New	12/4/2008 3:31:20 PM	<input type="checkbox"/>	Fetch
Adobe Reader 9	New	12/4/2008 3:31:20 PM	<input type="checkbox"/>	Fetch
EMCO MSI Package Builder Enterprise	New	12/4/2008 3:31:20 PM	<input type="checkbox"/>	Fetch
EMCO MSI Package Builder Professional	New	12/4/2008 3:31:20 PM	<input type="checkbox"/>	Fetch
EMCO Network Inventory Enterprise	New	12/4/2008 3:31:20 PM	<input type="checkbox"/>	Fetch
EMCO Remote Administration Professional	New	12/4/2008 3:31:20 PM	<input type="checkbox"/>	Fetch
EMCO Remote Desktop Professional	New	12/4/2008 3:31:20 PM	<input type="checkbox"/>	Fetch
EMCO Remote Installer Professional	New	12/4/2008 3:31:20 PM	<input type="checkbox"/>	Fetch
Intel(R) Graphics Media Accelerator Driver	New	12/4/2008 3:31:20 PM	<input type="checkbox"/>	Fetch
LiveUpdate 3.2 (Symantec Corporation)	New	12/4/2008 3:31:20 PM	<input type="checkbox"/>	Fetch
Norton Ghost	New	12/4/2008 3:31:20 PM	<input type="checkbox"/>	Fetch
VMware Remote Console Plug-in	New	12/4/2008 3:31:20 PM	<input type="checkbox"/>	Fetch
Windows Vista	New	12/4/2008 3:31:20 PM	<input type="checkbox"/>	Fetch