

# Knowledgebase Article

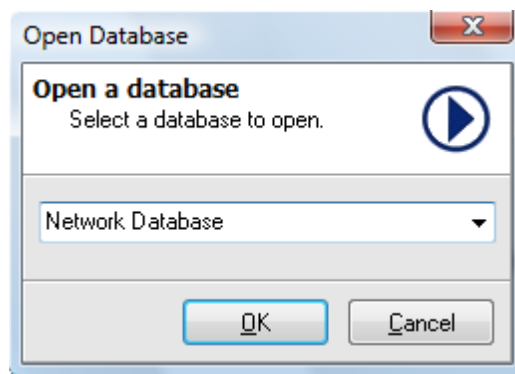
---

## Move saved database to another machine in NI

© Copyright 2001-2012 EMCO Software

## Move saved database to another machine in NI

1. Open the installation directory of the **EMCO Network Inventory** usually %Program Files\EMCO Network Inventory.
2. Right click Data folder in the NI installation directory.
3. Select Copy from the pop-up menu item to copy the machine data.
4. Paste the copied files on a removable disk (CD or USB storage device)
5. Open the removable disk (CD or USB storage device) on the destination machine and copy the Network Inventory data.
6. Open the **EMCO Network Inventory** installation directory on the destination machines and paste the copied files.
7. Run **EMCO Network Inventory**.
8. Select Open database menu item under File menu.
9. **Open Database** dialog appears on the screen.
10. Select the required database name from the drop-down list.



11. Click **OK** button.
12. This will load data from the selected database.