

## EMCO WakeOnLan



### Free Wake-on-LAN (WOL) Tool for Powering Up PCs Remotely

This visual Wake-on-LAN utility allows powering up one or multiple network PCs with a single mouse click. It is ready to work in networks of any scale and automates WOL operations. It includes features for detecting MAC addresses of remote PCs and sending WOL packets to multiple PCs in parallel. WOL operations can be executed on demand or automated and executed on schedule at the defined date/time or on a regular basis daily, weekly or monthly.

EMCO WakeOnLan is available in commercial and freeware editions. Check the feature list to see the differences. The commercial edition can be evaluated for free. The freeware edition is free for personal and commercial usage.

This Wake-on-LAN (WOL) utility allows you to power up network PCs quickly and easily. It automates all Wake-on-LAN stages from collecting MAC addresses to sending WOL packets and can be used in any kind of networks. The application is available in two editions.

#### WakeOnLan Free: Wake-on-LAN for Small Networks

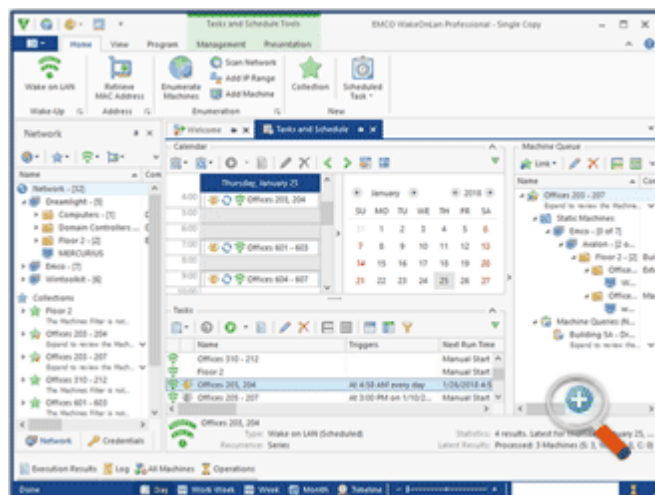
The Free edition allows you to scan a network and discover PCs available in workgroups and domains. This edition of the program allows you to can select up to 5 network PCs and send them a Wake-on-LAN packet to power them up remotely. The Wake-on-LAN is initiated on multiple selected PCs simultaneously in order to reduce a wake up time.

This edition allows you to create up to 2 tasks to wake up remote PCs on schedule. You can schedule wake up for one-time or recurrent execution. This edition works as a Windows program, so need to keep it running in an active Windows user session to execute scheduled tasks. If you log off from Windows or reboot a PCs the program the program is closed and scheduled tasks aren't executed.

#### WakeOnLan Professional: Advanced Wake-on-LAN

The Professional edition of the program can be used in networks of any size. It allows scanning domains and workgroups to detect available PCs. This edition doesn't limit a number of target PCs in the Wake-on-LAN operation, so you can wake up simultaneously as many PCs as you need.

You can automate wake up operations in your organization by scheduling Wake-on-LAN operations. You can create as many WOL tasks as you need and schedule them for one-time or recurrent execution. This edition of the program works as a Windows service, so scheduled tasks are executed if you log off from Windows or reboot the PC where the program is installed.



## EMCO WakeOnLan Features and Advantages

What is the difference between EMCO WakeOnLan and other Wake-on-LAN utilities? EMCO WakeOnLan is designed to wake up multiple PCs simultaneously, and it is ready to work in large networks. If you are looking for a reliable Wake-on-LAN tool for a corporate network, you can benefit from the features listed below.

#### Wake-on-LAN Across Subnets

Depending on your network configuration, you can use different methods of transmitting WOL packets. In particular, you can use any of broadcast, unicast, directed broadcast and other transmission methods in order to deliver WOL packets to PCs located in the same or different network subnets. You can also specify a custom remote UDP port, if required.

#### Wake-on-LAN Tasks Scheduling

Using the program, you can completely automate Wake-on-LAN operations in your organization. You can create WOL tasks and schedule them for automatic one-time execution at a defined date and time or for recurrent execution on a daily, weekly or monthly basis. The scheduled tasks can be managed through an intuitive visual interface.

### Flexible WOL Targets Configuration

Wake-on-LAN can be executed on static and dynamic groups of target PCs. You can configure static groups by selecting target PCs manually. To configure dynamic groups, you can use queries. The queries are executed every time before the WOL execution to report the actual set of PCs, for example all PCs from a particular Organization Unit in Active Directory.

### Automatic MAC Address Detection

To generate a WOL packet, the program needs to know the MAC address of the target PC. The program automatically detects MAC addresses of remote PCs using different methods, namely: Neighbor Discovery, NetBIOS, WinAPI, WMI. The program can also extract MAC addresses from Microsoft DHCP, which works even for PCs that are turned off.

## Feature List

Here you can find a complete list of the product features. All features come with detailed explanations and some of them have links to correspondent screenshots, so you can get an idea how they can be used on practice.

	Free Edition	Professional Edition
<b>Wake-on-LAN Execution</b>		
Wake-on-LAN Targets	5 hosts	Unlimited remote PCs
Manual Wake-on-LAN Execution	✔	✔
Scheduled Wake-on-LAN Execution	2 tasks of every type	Unlimited tasks
<b>Wake-on-LAN Configuration</b>		
Multiple Wake-on-LAN Transmission Methods	✔	✔
Automatic MAC Addresses Detection	✔	✔
Power Peaks Prevention	✘	✔
Wake-on-LAN Settings Customization	✘	✔
<b>Execution Results and Notifications</b>		
Wake-on-LAN Execution Status Reporting	✔	✔
E-Mail Notifications with Execution Status	✔	✔
Custom E-Mail Notification Settings for Tasks	✘	✔
<b>The Program Architecture and Configuration</b>		
Run as a Service	✘	✔
Program Database	Per-user database	Per-machine database
External MS SQL Server Database	✘	✔

## EMCO Remote Shutdown Links

Product Overview: <https://emcosoftware.com/wake-on-lan>

Downloads: <https://emcosoftware.com/wake-on-lan/download>

Purchase: <https://emcosoftware.com/wake-on-lan/purchase>